

Technisafe Antislip and Industrial Range



Swimming Pool Complex - Aulanko, Finland



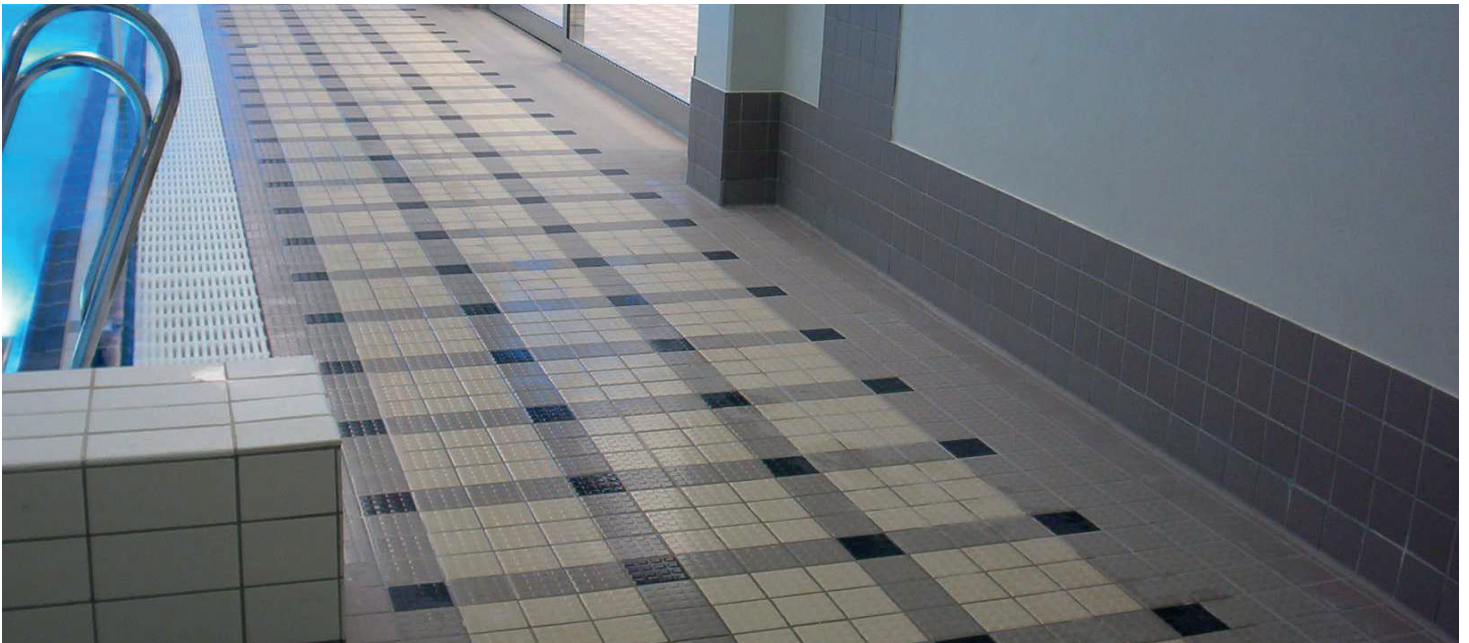
Kinsmead Pool, UK



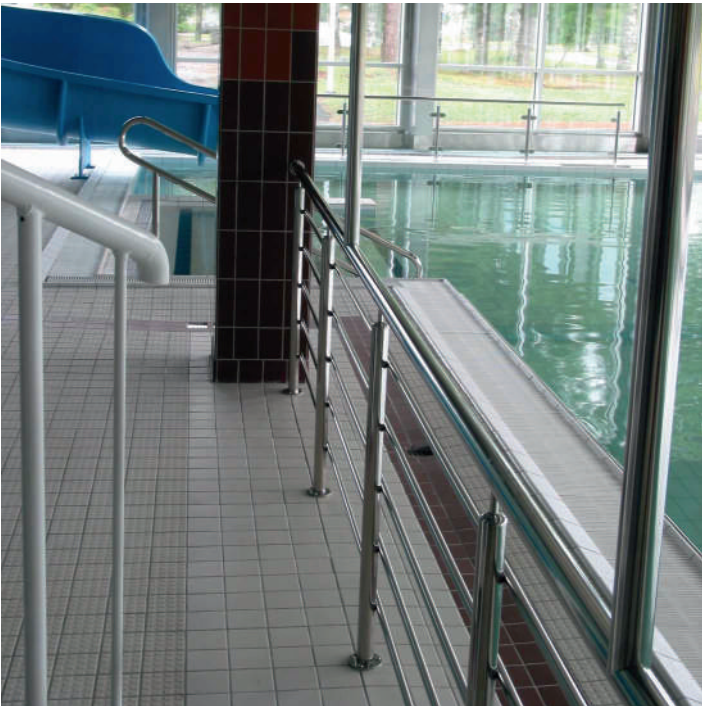
Municipal Swimming Pool - Tammissaari, Finland

SERIES	COLOURS	SIZES					
		10x10	10X10	10x10	10x10	10x10	
		15x15	15X15	15x15	15x15	15x15	
Series 1	01	Beige	●	●	●	●	●
	02	Speckled Grey	●	●	●	●	●
	03	Yellow	●	●	●	●	●
	05	Old Rose	●	●	●	●	●
	06	Light Grey (Brown.)	●	●	●	●	●
	08	Granite Rose	●	●	●	●	●
	09	Granite Grey	●	●	●	●	●
	17	Speckled Brown	●	●	●	●	●
Series 2	07	Light Grey (Blue)	●	●	●	●	●
	10	Granite Burgundy	●	●	●	●	●
	12	Granite Blue	●	●	●	●	●
	24	Speckled Black/White	●	●	●	●	●
Series 3	13	Turquoise	●	●	●	●	●
	14	Black	●	●	●	●	●
	15	Medium Grey	●	●	●	●	●
	16	White	●	●	●	●	●
	19	Pink	●	●	●	●	●
	20	Brick-red	●	●	●	●	●
	21	Ochre Yellow	●	●	●	●	●
	22	Granite Green	●	●	●	●	●
	26	Speckled White	●	●	●	●	●
	27	Light Blue	●	●	●	●	●
	28	Light Green	●	●	●	●	●
30	Dark Grey	●	●	●	●	●	
Series 4	04	Caramel	●	●	●	●	●
	11	Blue (Cobalt)	●	●	●	●	●
	18	Dark Green	●	●	●	●	●
	29	Coffee Brown	●	●	●	●	●
Series 5	23	Speckled Yellow	●	●	●	●	●
	25	Yellow (Lemon)	●	●	●	●	●

*indent lead times apply to these products



Mariebad Spa & Bad - Alands, Finland



Swimming Pool Complex - Ulvila, Finland

SLIP RESISTANCE:		VALUES:		
Areas with footwear	ASTM - Dynamic Coefficient of Friction (DCOF) ANSI A 137.1-2012	0.62		10x10 / 4"x4" Plain finish (smooth)
		0.65		10x10 / 4"x4" Riven (RT) finish
		DRY	WET	SIZES / SURFACE TEXTURE
	BS-7976-2	60	37	10x10 / 15x15 Plain finish (smooth)
	PENDULUM (CERAM - UK)	61	53	15x15 Riven (RT) finish
Displacement volume / Expulsion space		67	54	15x15 Square studs (SS) finish
		81	70	15x15 Round studs (RC) finish
		87	72	15x15 Diamond studs (DD) finish
	DIN 51130 (HS-KOBLENZ - DE)	$6^\circ \leq R9 \leq 10^\circ$		30x30 Plain finish (smooth)
		$10^\circ < R10 \leq 19^\circ$		10x10 / 15x15 Plain finish (smooth)
Areas with bare-footed		$19^\circ < R11 \leq 27^\circ$		10x10 / 15x15 Square studs (SS) and in Round studs (RC)
		$27^\circ < R12 \leq 35^\circ$		30x30 Rubber (R), 30x30 Riven (RT)
	DIN 51097 (HS-KOBLENZ - DE)	$12^\circ \leq A < 18^\circ$		10x10 / 15x15 Riven (RT) and in Diamond studs (DD)
	(HS-KOBLENZ - DE)	$18^\circ \leq B < 24^\circ$		30x30 Plain finish (smooth)
	(CERAM - UK)	$18^\circ \leq B < 24^\circ$		10x10 / 15x15 Plain finish (smooth), 30x30 Rubber (R), 30x30 Riven (RT)
(CERAM - UK)	$C \geq 24^\circ$		10x10 / 15x15 Plain finish (smooth)	
(HS-KOBLENZ - DE)	$C \geq 24^\circ$		15x15 Round studs (RC)+Diamond studs (DD)+Riven (RT)+Square studs (SS)	
	$C \geq 24^\circ$		10x10 / 15x15 Round studs (RC)+Diamond studs (DD)+Riven (RT)+Square studs (SS)	